

# THINKING ECOLOGICALLY – ACTING ECONOMICALLY.

MAN Genuine Parts ecoline.



# MAN SUSTAINABILITY. STRATEGICALLY ANCHORED, PUT INTO PRACTICE EVERY DAY

Climate change, pollution of the environment, scarcity of resources:

As a globally operative company, we believe that it's our responsibility to counter these global developments. That's why the topic of sustainability is important to us – from vehicle development up to the lifecycle of every single part.



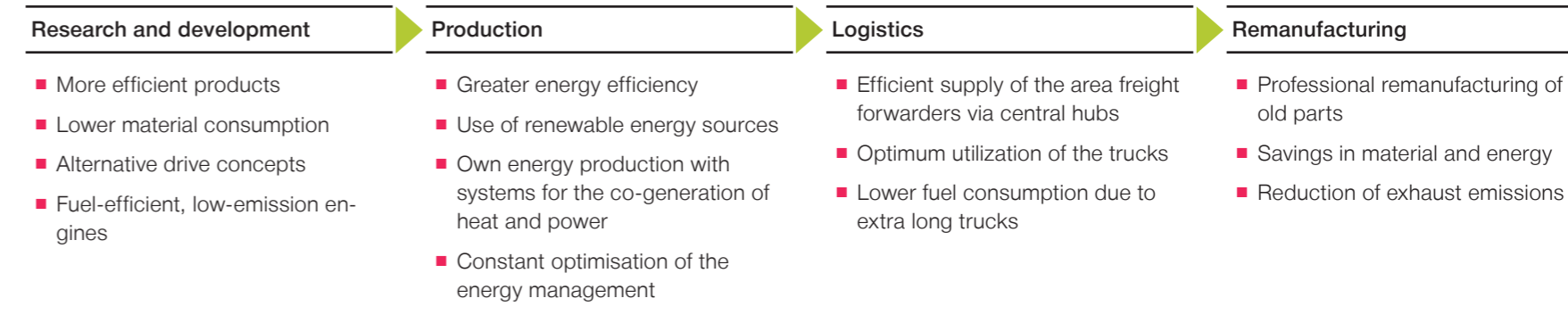
## Saving resources, protecting the environment.

28 production facilities and production-related sites of the MAN group are certified in accordance with the environmental management standard ISO 14001. Through this, we have committed ourselves to reducing the environmental impact. The methods used to achieve this include production with a minimum of raw material and energy. How both of these can be significantly decreased is demonstrated by our environmentally friendly reconditioning process of old parts.

We have been providing professionally reprocessed replacement parts since the 1960s. These provide economical and ecological advantages over brand-new parts.

## Thinking ecologically and acting economically with MAN Genuine Parts.

At MAN, we make a valuable contribution towards the protection of the environment.



# MAN GENUINE PARTS ECOLINE. ENVIRONMENTAL PROTECTION IS ECONOMICAL, FOR EVERYONE.



MAN Genuine Parts ecoline are professionally remanufactured parts for vehicles that are more than four years old. They enable repair of your MAN vehicle at a cost commensurate with the vehicle's current value with maximum MAN quality. They are not only an economically sensible alternative to brand-new spare parts, but also ecological:

**They contribute to as small a CO<sub>2</sub> footprint as possible and hence to the preservation of an intact natural world and environment.**

#### → Advantages at a glance

##### MAN Genuine Parts ecoline

- save resources and the environment by the remanufacturing of old parts
- use less energy than the new production of parts
- lower the CO<sub>2</sub> emission
- reduce the amount of old parts to be disposed of



# SUSTAINABLE REPROCESSING. CONNECTING QUALITY AND ENVIRONMENTAL PROTECTION.

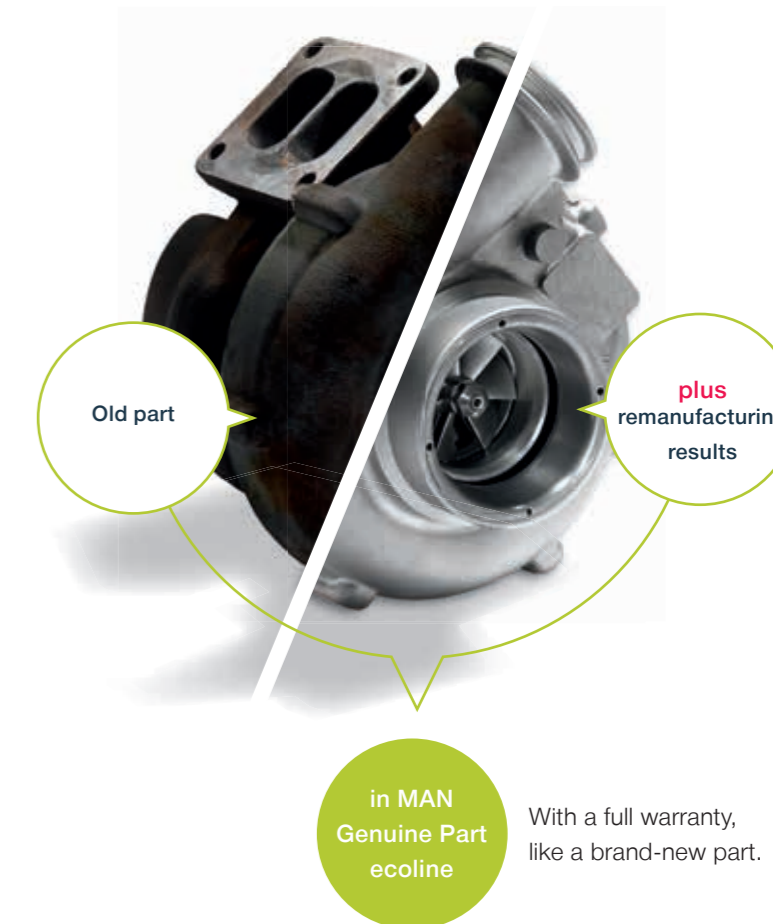


**Whoever decides on a reprocessed MAN Genuine Part ecoline can be sure: It is just as fully functional as a new MAN Genuine Part.**

This is ensured by the clearly defined standardized process that we use to remanufacture old parts. Although a full guarantee cannot be given for the reliability and longevity of overhauled, repaired or recycled parts, this is not the case for reprocessed parts from MAN.

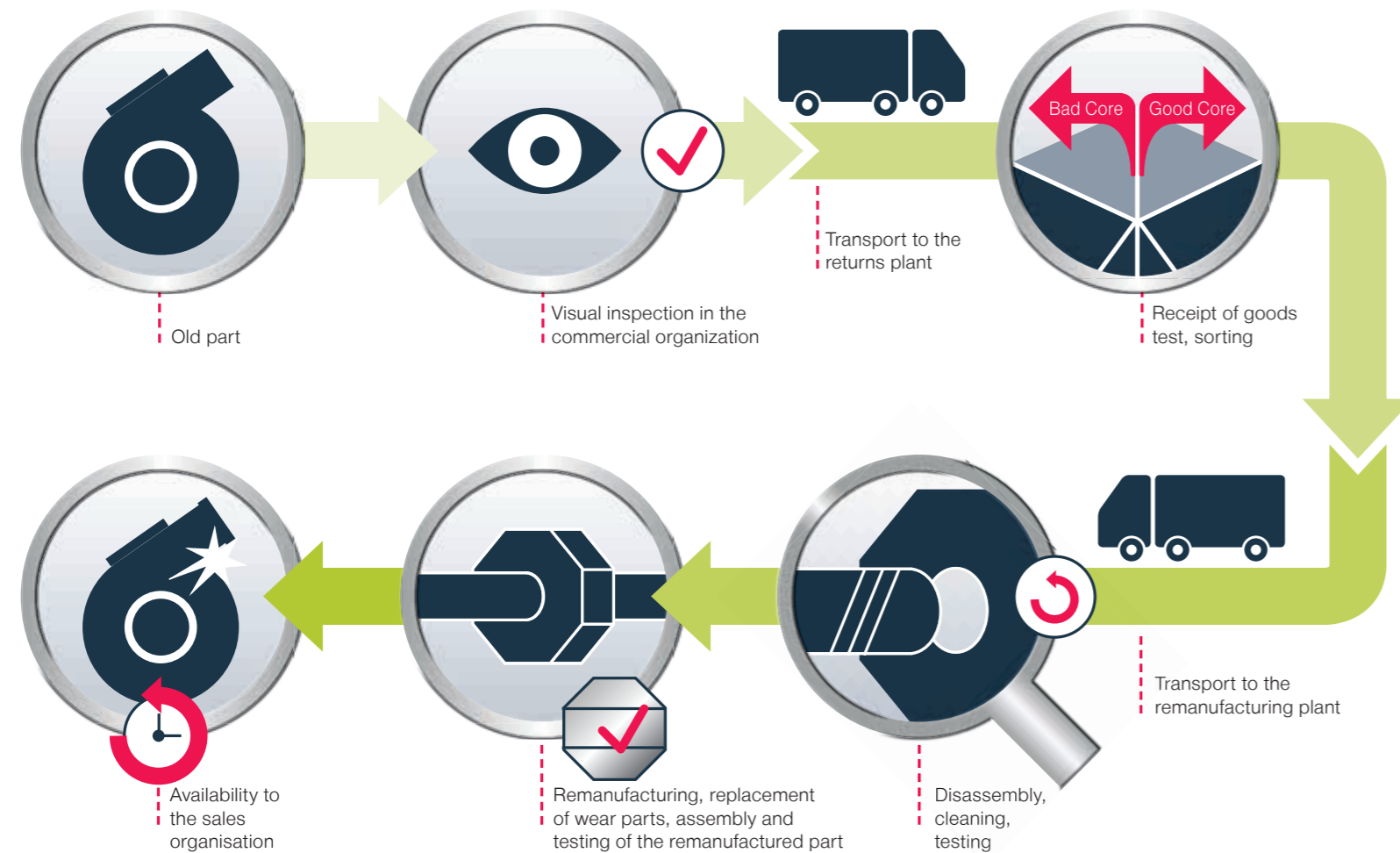
MAN Genuine Parts ecoline are completely disassembled, cleaned, tested and individual components replaced where necessary. Wear parts are always replaced. This ensures that all genuine part specifications are fulfilled and the quality of MAN Genuine Parts is achieved.

**!** MAN Genuine Parts ecoline ensure a perfect fit, and provide top performance together with the other MAN parts. This guarantees the equivalent level of performance as brand-new MAN Genuine Parts.



# THE REPLACEMENT CYCLE. FROM AN OLD PART TO MAN GENUINE PART ECOLINE.

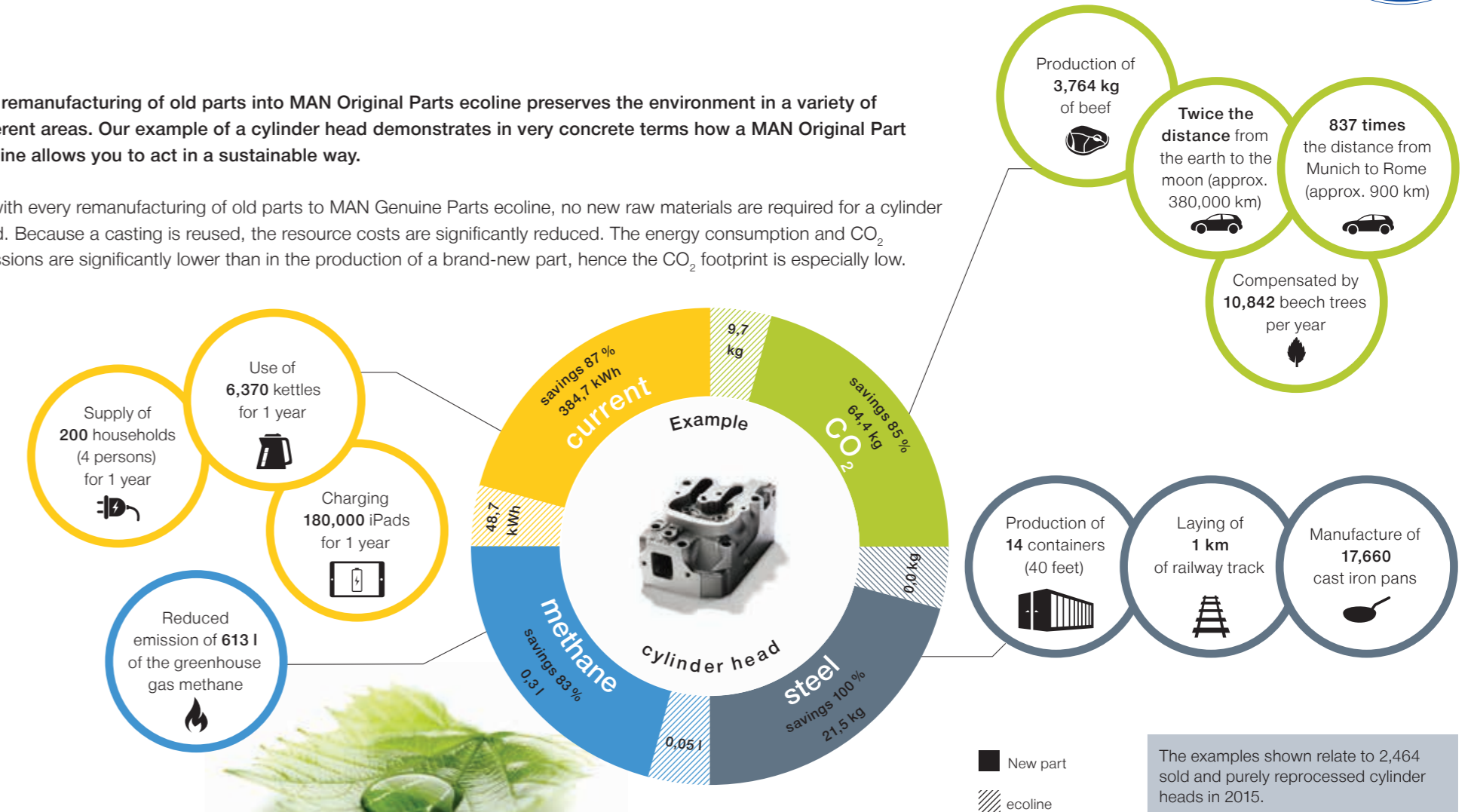
The key to an environmentally replacement cycle are the old parts (cores) that are collected at our MAN service operations and partners. If an old part is removed from a vehicle, a standardized process is started whose result is a remanufactured MAN Genuine Part ecoline. We offer them to our customers again for purchase.



# EXAMPLE OF THE CYLINDER HEAD. MAN GENUINE PARTS ECOLINE ARE THIS ENVIRONMENTALLY FRIENDLY.

The remanufacturing of old parts into MAN Original Parts ecoline preserves the environment in a variety of different areas. Our example of a cylinder head demonstrates in very concrete terms how a MAN Original Part ecoline allows you to act in a sustainable way.

As with every remanufacturing of old parts to MAN Genuine Parts ecoline, no new raw materials are required for a cylinder head. Because a casting is reused, the resource costs are significantly reduced. The energy consumption and CO<sub>2</sub> emissions are significantly lower than in the production of a brand-new part, hence the CO<sub>2</sub> footprint is especially low.



**MAN Truck & Bus AG**

Postfach 50 06 20

80976 München, Deutschland

[www.mantruckandbus.com](http://www.mantruckandbus.com)

Edition 09/2018 · Texts and illustrations are non-binding.

We reserve the right to make modifications for reasons of technical progress.

All specifications in this publication represent the status at the time of going to press.

---

**MAN Truck & Bus – A member of the MAN Group**